

DXF Import and Export for EASE 4.1

Bruce C. Olson, Dr. Waldemar Richert – ADA
Version 4.02
Copyright © 2002-2003 Acoustic Design Ahnert

EASE 4.1 allows both the import and export of model information using the AutoCAD DXF file format. The module used for this capability is called EASE Import / Export.

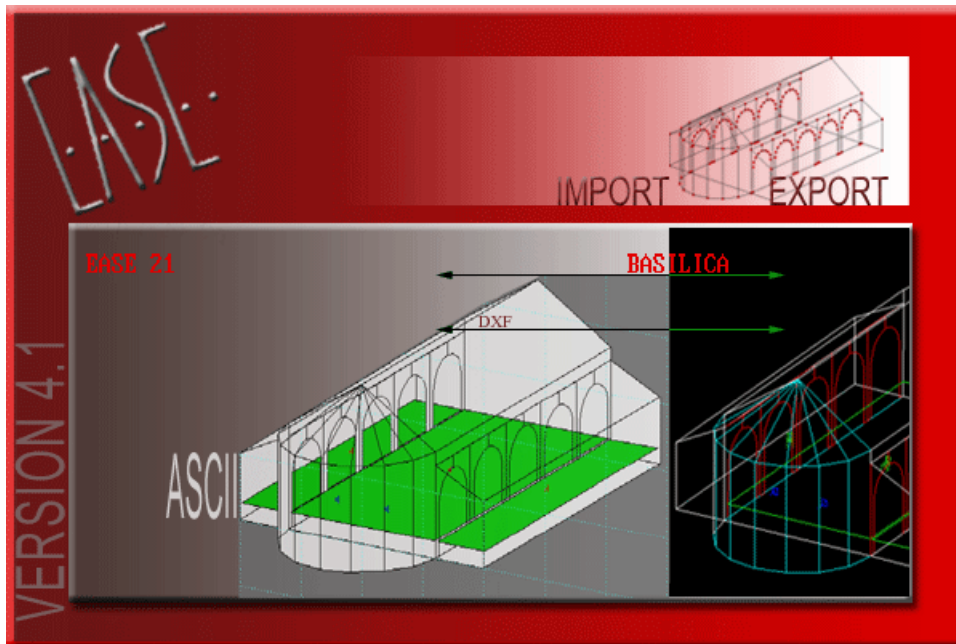


Figure 1: EASE 4.1 Import / Export Opening Screen

The following topics are covered in this application note:

- 1) **'Import DXF'** from the EASE Import / Export 'Tools' menu. (See *Import of an AutoCAD DXF file into an Ease 4.1 Project file* on page 2.)
- 2) **'Export DXF'** from the EASE Import / Export 'Tools' menu. (See *Export of an Ease 4.1 Project to an AutoCAD DXF file* on page 8.)
- 3) **'Material Color Table'** from the EASE Import / Export 'Tools' menu. (See *Material and Color Translation* on page 11.)

Import of an AutoCAD DXF file into an Ease 4.1 Project file

You can import a DXF file created with AutoCAD or other programs. **Import DXF** reads AutoCAD geometry data, which includes lines, 2D & 3D polylines, 2D solids, 3D faces, circles, and arcs. **Import DXF** cannot import regions or 3D solids. Use the AutoCAD **FREEZE** command or turn **OFF** the layer of entities that you do not want to import into EASE. AutoCAD blocks can only be imported as EASE Loudspeakers, Listener Seats, Lamps, and IR Emitters. These blocks should be placed on suitable layers. (See *Loudspeakers, Listener Seats, Lamps, and IR Emitters* on page 7)

All EASE 4.1 elements can be represented in AutoCAD and then be imported via a DXF file. This includes Edges, Faces, Audience Areas, Loudspeakers, Listener Seats, Lamps, and IR Emitters.

Colors of elements and layers can be used to automatically assign an EASE Material to an imported Face. Placing entities on specially named layers for each wall material can also be used to assign the EASE Material. (See *Material and Color Translation* on page 11)

Note

Any AutoCAD entities that are not handled by the **Import DXF** command should be converted to a less complex representation in your CAD program. The AutoCAD **EXPLODE** command should be used to simplify entities such as blocks, meshes, 3D objects, or other complex components. Blocks may need to be exploded multiple times if they have other blocks embedded in them. (Do not **EXPLODE** the blocks used for EASE Loudspeakers, Listener Seats, Lamps, and IR Emitters, however.)

Some hints for AutoCAD Users

If a new drawing of a room is being created in AutoCAD, it is preferable to draw the room using AutoCAD **3D SOLIDS**. The special shapes of the room elements are then made with the commands **UNION**, **SUBTRACT**, **INTERSECT**, **SLICE** and **INTERFERE**.

You then can use the AutoCAD **EXPORT** command to create a 3D Studio file. Then you create a new drawing and use the AutoCAD **IMPORT** command to create a file that uses the entities stored in the 3D Studio file.

Note

If this new drawing contains any mesh entities, you will need to use the AutoCAD **EXPLODE** command to simplify them.

If you want to import materials, please sort the faces to the right layers with the right layer names. (See *Material and Color Translation* on page 11).

Now save the drawing in DXF format. This file will now only contain entities that can all be imported by EASE.

If you don't want to do that procedure with 3D-Studio export, you will have to explode the **BOXES** and **WEDGES** and **3D SOLIDS** to **LINES**. Do not use **3D SOLIDS** with round faces (**SPHERE**, **CYLINDER**, **CONE** or **TORUS**), because those solids explode to **BODYS**, which cannot be imported into EASE with the current converter. The same is true for **EXTRUDED** round 2D elements and **REVOLVED 3D SOLIDS**.

Another very good (maybe the best) idea is to use the commands for **3D SURFACES** in AutoCAD: **BOX**, **WEDGE**, **PYRAMID**, **CONE**, **SPHERE**, **DOMED**, **DISH**, **TORUS**, **3DMESH**, **REVSURF** (revolved surface), **TABSURF** (tabulated surface), **RULESURF** (ruled surface) and **EDGESURF** (edge surface). These commands make nets of polylines with selectable **MESH** density. Now all curves are approximated by plane areas. The command **EXPLODE** will then produce the **3DFACES**.

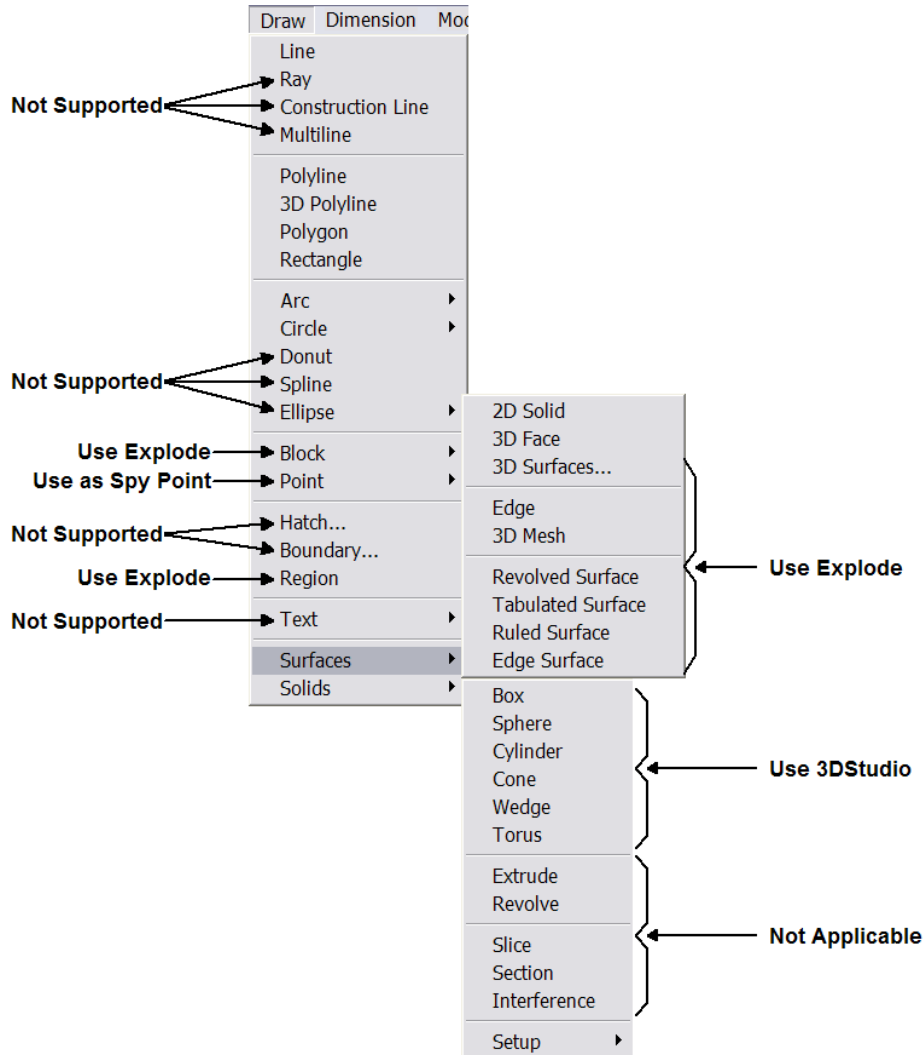


Figure 2: AutoCAD Draw Menu with Surfaces and Solids Submenus

If you are not sure what kind of elements you have in your drawing and how many of them, use the AutoLISP command **SSX**. In the AutoCAD drawing, type **SSX** and then don't pick an element, use the **ENTER** key. Next, type **E** for element and then the name of the element you are interested in, for instance **BODY**, **BLOCK** and so on. After the final **ENTER** the number of those elements in the drawing is output. If you pick one element from the display after typing **SSX**, the type of the element is explored. Alternatively, you can use the "Property"-window, to analyze your drawing.

There are some additional programs, like "3D Studio (MAX)" (*.3DS) or "Corel Dream 3D" (*.D3D or *.RD4) which have a DXF export of 3D faces, which also produce no problems for DXF Import in EASE 4.1.

Some hints, if you do not have AutoCAD

In the case you are an EASE user and have received a DXF file from somewhere, you may not know anything about the included elements, but you want to import it into EASE. In this case, try the following steps.

To get a fast impression of the contents of the DXF ‘black box’, use the DXF Import and do not choose any of the check boxes in the dialog. In addition, you should type zero for the ‘Vertex Snap Distance’ to maintain all the original coordinates. This will make the import routine faster. After importing into EASE, have a look at the contents and make the first decisions.

Do you think that the DXF should contain more objects (maybe, because it is a big file)? Then try at first the option “Include ‘off’ and ‘frozen’ Layers”. Do you see more objects now?

Second, decide if the coordinates have the right numbers. If not, try to change the unit-conversion or the scale value in the DXF Import window. (U.S. Architectural units are, by default, inches in AutoCAD.)

Suggested solutions for unexpected DXF Import results

Problem with Import	Solution
Only one side of the room is imported	- Select <input checked="" type="checkbox"/> Add symmetrical Entities
Many Edges , but few Faces	- Select <input checked="" type="checkbox"/> Closed multiple Lines to Faces
Many small Faces	- Select <input checked="" type="checkbox"/> Collect scattered Faces
Some Faces look incomplete	- Select <input checked="" type="checkbox"/> Overlap Test
Some Faces intersect other Faces without a common edge	- Select <input checked="" type="checkbox"/> Cut intersecting Faces
Too many small Faces	- Increase the value for Plane Face Tolerance
Some Face edges have too many Vertices	- Select <input checked="" type="checkbox"/> Straighten Border of Faces - Increase the value for Vertex Snap Distance
Some Face edges are not straight	- Select <input checked="" type="checkbox"/> Straighten Border of Faces
There are gaps between Face edges	- Increase the value for Vertex Snap Distance
Front and Rear Faces of thin walls end up as a single Face	- Decrease the value for Vertex Snap Distance - Perhaps divide the drawing into multiple parts
A small column has the wrong number of Faces	- Change the value for Min. Circle Sectors
Large circular walls have too many Faces	- Increase the value for Max. Arc Sector Length
There are Faces that do not belong to the room	- Try to delete them, if you have AutoCAD <input checked="" type="checkbox"/> Waste outside Faces Detection Order: 1 <input type="checkbox"/> Auto - Select <input type="checkbox"/> Auto and start with a low number for Detection Order (Also see Spy-Points below)

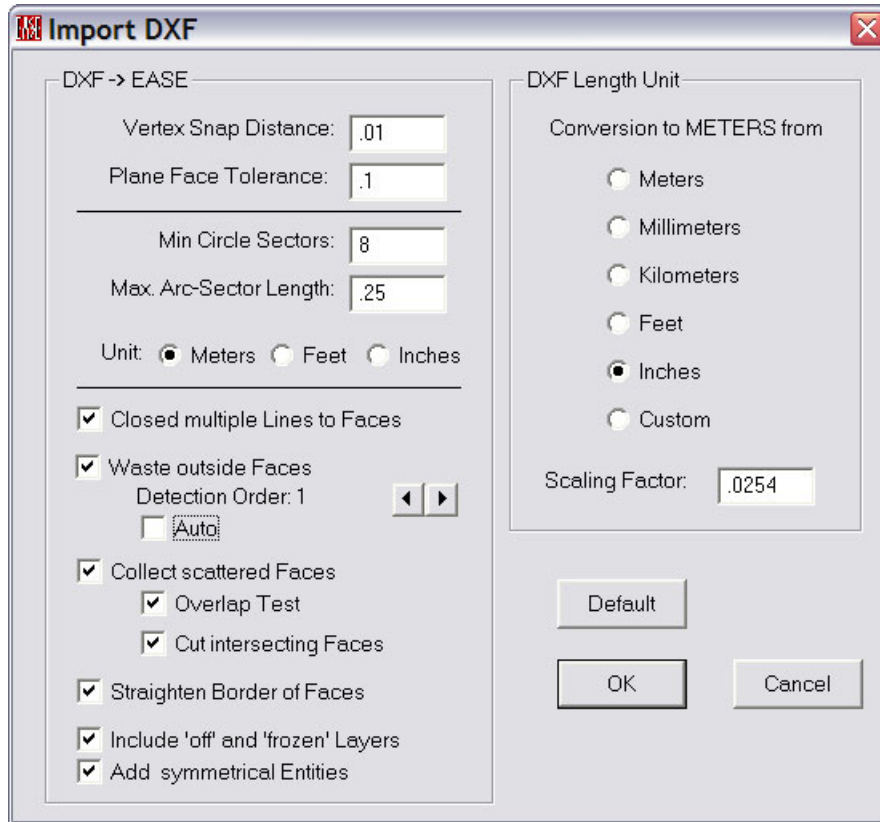


Figure 3: Import DXF dialog box

Import DXF Details

The following EASE items will be created using the listed AutoCAD entities in the DXF file.

► Faces, and Edges:

For Edges, the EASE item color is from the AutoCAD *Entity* color. Faces will use the following to select the color and material to be used:

AutoCAD Layer Name starts with “EASE-\$”

- the AutoCAD *Entity* color is the default
 - Face is one-fold
 - EASE **Face** material is taken from the AutoCAD *Layer* Name (the part following the \$ sign), EASE **Face** color is the EASE default color,
 - EASE **Rear** material is the EASE default material,
 - EASE **Rear** color is the EASE default color.
- the AutoCAD *Entity* color is any other color
 - Face is two-fold.
 - EASE **Face** material is taken from the AutoCAD *Layer* Name (the part following the \$ sign), EASE **Face** color is the EASE default color,
 - EASE **Rear** material uses the AutoCAD *Entity* color to select the EASE material,
 - EASE **Rear** color is the AutoCAD *Entity* color.

AutoCAD Layer Name starts with “EASE”

- Face is two-fold.
- EASE **Face** material uses the AutoCAD *Layer* color to select the EASE material,
- EASE **Face** color is the AutoCAD *Layer* color,
- EASE **Rear** material uses the AutoCAD *Entity* color to select the EASE material,
- EASE **Rear** color is the AutoCAD *Entity* color.

Any other AutoCAD Layer Name

- the AutoCAD *Layer* color is the default, and the AutoCAD *Entity* color is the default
 - Face is one-fold
 - EASE **Face** material is the EASE default material (ABSORBER),
 - EASE **Face** color is the EASE default color,
 - EASE **Rear** material is the EASE default material (ABSORBER),
 - EASE **Rear** color is the EASE default color.
- the AutoCAD *Layer* color is the default, and the AutoCAD *Entity* color is any color except the default
 - Face is one-fold
 - EASE **Face** material uses the AutoCAD *Entity* color to select the EASE material,
 - EASE **Face** color is the AutoCAD *Entity* color,
 - EASE **Rear** material is the EASE default material (ABSORBER),
 - EASE **Rear** color is the EASE default color.
- the AutoCAD *Layer* color is any color except the default, and the AutoCAD *Entity* color is the default
 - Face is one-fold.
 - EASE **Face** material uses the AutoCAD *Layer* color to select the EASE material,
 - EASE **Face** color is the AutoCAD *Layer* color,
 - EASE **Rear** material is the EASE default material (ABSORBER),
 - EASE **Rear** color is the EASE default color.
- the AutoCAD *Layer* color is any color except the default, and the AutoCAD *Entity* color is any color except the default
 - Face is two-fold.
 - EASE **Face** material uses the AutoCAD *Layer* color to select the EASE material,
 - EASE **Face** color is the AutoCAD *Layer* color,
 - EASE **Rear** material uses the AutoCAD *Entity* color to select the EASE material,
 - EASE **Rear** color is the AutoCAD *Entity* color.

The EASE entities will be determined as follows:

- 2D Lines [**LINE**]
 - Closed multiple Lines to Faces
 - entered as an individual **Edge**,
 - with thickness: entered as a quadrangle **Face**,
 - Closed multiple Lines to Faces
 - connected lines that build a planar closed loop, entered as a single **Face**
 - with thickness: several **Faces** create an enclosed body (with floor and ceiling).
- 2D and 3D Polylines [**PLINE** and **3DPOLY**]
 - Closed multiple Lines to Faces
 - not closed: entered as individual **Edges**,
 - included arcs are converted to lines (see below: **ARC**),
 - not closed **PLINE** with thickness: create several **Faces**,
 - Closed multiple Lines to Faces
 - closed: treated like connected lines: entered as a single **Face**,
 - included arcs are converted to lines (see below: **ARC**),
 - closed **PLINE** with thickness: several **Faces** create an enclosed body (with floor and ceiling),
 - **3DPOLY** that is planar: entered as a single **Face**, otherwise it is cut into multiple planar **Faces**.

- **3DFACE**
 - **3DFACE** that is planar will be entered as a quadrangle **Face**,
 - if the quadrangle is not planar, it will be divided into 2 triangular **Faces**.
- **CIRCLE**

Converted to a polygon using the number of edges determined by the values entered for **Min. Circle Sectors** and **Max. Arc-Sectors Length** in the **Import DXF** dialog window.

 - entered as a single **Face**,
 - with thickness: several **Faces** create an enclosed body (with floor and ceiling).
- **ARC**

Converted to a polygon using the number of edges determined by the values entered for **Min. Circle Sectors** and **Max. Arc-Sectors Length** in the **Import DXF** dialog window.

 - entered as multiple **Edges**.
- **2D Solids [SOLID]**
 - entered as a quadrangle **Face**,
 - with thickness: several **Faces** create an enclosed body (with floor and ceiling).
- **TRACE**
 - entered as a single **Face**,
 - with thickness: several **Faces** create an enclosed body (with floor and ceiling).

► **Audience Areas:**

These entities will only be created as EASE **Audience Area** if they are located on the **EASE-AREAS** AutoCAD layer. They will be created as EASE **Faces** or **Edges** as above if not.

The EASE item color is from the AutoCAD *Entity* color.

- **2D Lines [LINE]**
 - 4 connected lines that build a planar closed loop: entered as a single **Audience Area**.
- **2D and 3D Polylines [PLINE and 3DPOLY]**
 - treated like connected lines: entered as a single **Audience Area**,
 - included arcs are converted to lines.
- **3DFACE**
 - **3DFACE** that is planar will be entered as a quadrangle **Audience Area**,
- **CIRCLE**

Converted to a 4-sided polygon using the first 4 edges determined by the values entered for **Min. Circle Sectors** and **Max. Arc-Sectors Length** in the **Import DXF** dialog window.

 - entered as a single **Audience Area**.

► **Loudspeakers, Listener Seats, Lamps, and IR Emitters:**

- **BLOCK** insert

To read **BLOCK** inserts as EASE elements, they must reside on a layer with a name that starts with **EASE** and then an arbitrary character (normally '-'). The next two characters (shown in **BOLD** below) decide if and to what kind of EASE item the **BLOCK** will be converted.

- SP eakers or LO udspeakers	► Loudspeaker
- SE ats	► Listener Seat
- LA mps or LI ght	► Lamp
- IR (infrared) or EM itter or RA diator or MO dulator	► IR Emitter

Ease reads the positions and the orientation (angles) of the **BLOCK** inserts and enters these values into the property sheet for the EASE item. The entities that form the **BLOCK** and display the cases (shapes) are not used. The name of the block is used to select the correct entry from the appropriate EASE database.

The EASE item color is from the AutoCAD *Entity* color.

► **Spy-Points:**

A **spy-point** is a source of detection-rays for a special ray-tracing algorithm used to determine where the inside of the room is located. They are used when the **Waste outside Faces** checkbox is selected.

For very complex projects, it is strongly recommended that many spy-points be placed strategically in the AutoCAD drawing. Place at least one in every corridor or adjacent room connected by an open window. In this case, you can choose a low **Detection Order** of 0 or 1 and the time for the ray-tracing will be acceptable.

Note

If you are unable to manipulate the DXF with AutoCAD, you will not be able to set appropriate spy-points. The automatically set spy-point is in the geometrical center of all elements in the DXF file. Therefore, you cannot be sure that this point will be inside the room to analyze!

Also, for the first pass, do not choose a high 'Detection Order' or 'Auto' if the project has very many faces and you do not have much time! On the other hand, with this option you have the additional advantage that this routine will align all faces and will find two-fold faces.

- **POINT**

To read a **POINT** as an EASE Spy-Point, it must reside on a layer with a name that starts with **EASE-SPY**.

Export of an Ease 4.1 Project to an AutoCAD DXF file

You can export an EASE 4.1 Project model to a DXF file that can be opened with AutoCAD. **Export DXF** writes EASE model data, which includes Edges, Faces, Areas, Loudspeakers, Seats, Lamps, and Emitters. **Export DXF** cannot export Textures. AutoCAD blocks are created for EASE Loudspeakers, Seats, Lamps, and Emitters. These blocks will be placed on specially named layers. (See **block (Block Insert)** on page 10)

The EASE Material name will be used to create an AutoCAD layer for each set of faces that use the same wall material. The face color will also be assigned to assist with the later Import of the DXF file back into EASE. (See **Material and Color Translation** on page 11)

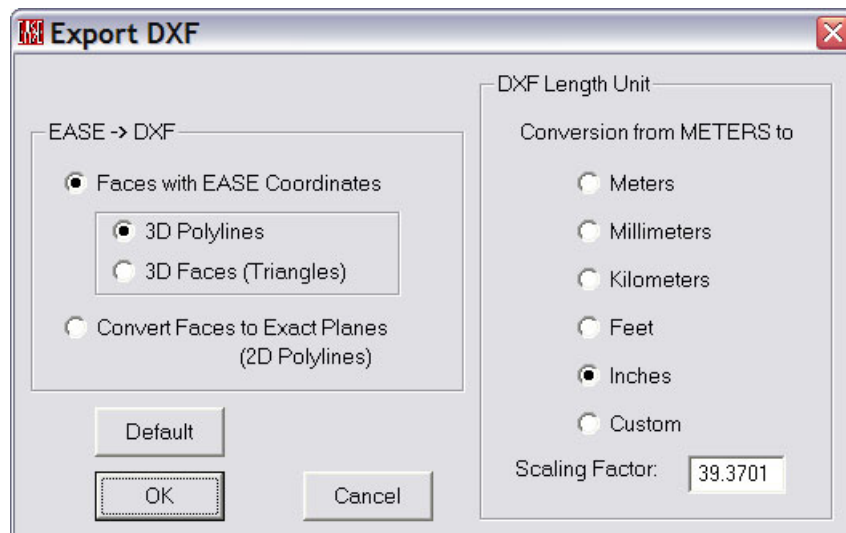


Figure 4: Export DXF dialog box

The remaining option, **3D Polylines** under **Faces with EASE Coordinates** will create entities that will not be rendered in AutoCAD if the coordinates are non-planar. This option will maintain the structure of the EASE Faces and the exact vertex coordinates, however.

The following AutoCAD entities will be created in the DXF file using the listed EASE items.

► **3DPOLY (3D Polylines):**

- **FACE**
 - placed on the **EASE-\$XYZ** layer (Where **XYZ** is the EASE Wall Material for the Front Face),
 - AutoCAD *Layer* color is from the EASE item color for the Front Face.
 - one-fold face: AutoCAD *Entity* color is the default AutoCAD color (7).
 - two-fold face: AutoCAD *Entity* color is from the EASE item color for the Rear Face.
- **AUDIENCE AREA**
 - placed on the **EASE-AREAS** layer,
 - AutoCAD *Entity* color is from the EASE item color.

► **3DFACE (Triangular 3D Faces):**

- **FACE**
 - placed on the **EASE-\$XYZ** layer (Where **XYZ** is the EASE Wall Material for the Front Face),
 - AutoCAD *Layer* color is from the EASE item color for the Front Face.
 - one-fold face: AutoCAD *Entity* color is the default AutoCAD color (7).
 - two-fold face: AutoCAD *Entity* color is from the EASE item color for the Rear Face.

► **PLINE (2D Polylines):**

- **FACE**
 - placed on the **EASE-\$XYZ** layer (Where **XYZ** is the EASE Wall Material for the Front Face),
 - AutoCAD *Layer* color is from the EASE item color for the Front Face.
 - one-fold face: AutoCAD *Entity* color is the default AutoCAD color (7).
 - two-fold face: AutoCAD *Entity* color is from the EASE item color for the Rear Face.

► **LINE (3D Lines):**

- **EDGE**
 - placed on the **EASE-EDGES** layer,
 - AutoCAD *Entity* color is from the EASE item color.

► **BLOCK (Block Insert):**

- **LOUDSPEAKER**
 - placed on the **EASE-SPEAKERS** layer,
 - AutoCAD *Entity* color is from the EASE Loudspeaker *Color*.
 - AutoCAD **BLOCK** Name is from the EASE Loudspeaker *Speaker Model*.
- **LISTENER SEAT**
 - placed on the **EASE-SEATS** layer,
 - AutoCAD *Entity* color is from the EASE Listener Seat *Color*.
 - AutoCAD **BLOCK** Name is always **SEAT**.
- **LAMP**
 - placed on the **EASE-LAMPS** layer,
 - AutoCAD *Entity* color is from the EASE Lamp *Color*.
 - AutoCAD **BLOCK** Name is from the EASE Lamp *Light Source*.
- **IR EMITTER**
 - placed on the **EASE-IR** layer,
 - AutoCAD *Entity* color is from the EASE IR Emitter *Color*.
 - AutoCAD **BLOCK** Name is from the EASE IR Emitter *Radiator*.

Material and Color Translation

This window is for the editing of the Material Color Coding for Import/Export DXF (see above). If a file called matcolor.lst exists in the EasePath folder, the dialog table will be filled with the values stored in it. If it does not exist, the set of default values will be placed in the table. Pressing OK will create this file from the values in the table if it does not yet exist.

If you want to import the correct materials from a DXF File, you have to make Layers with the corresponding colors in AutoCAD.

In Export DXF these Colors are created in the DXF file. If you have a material in your project which is not in your Material Color Table a layer will be created with a hint to the material-name and default color.

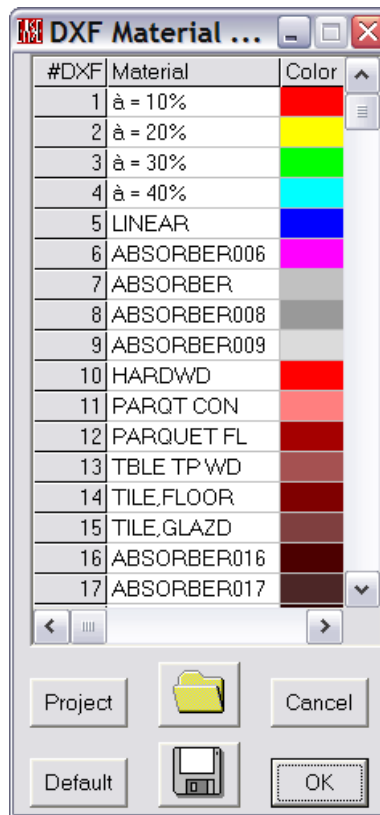


Figure 5: DXF Material Color Table